

NEOLUX[®]
GERMAN TECHNOLOGY

**NEOLUX[®] –
LED Retrofit Portfolio**

Product Information

NEOLUX® LED Retrofits

Bright and more modern light with a color temperature of 6000K and 6700K. The NEOLUX® Retrofits are the perfect entry - products for customers who wants to expire LED inside the car for a lower price.

- 12V LED T10 available in 6000K and 6700K color temperature
- 12V LED Festoon available in 6000K and 6700K color temperature
- 31mm, 36mm, 41mm 12V Festoon available for different application

Order code Policy:

- T10:

NT1060 =N (NEOLUX) + T10 + 60 (6000K)

NT1067 =N (NEOLUX) + T10 + 67 (6000K)

- Festoon (example):

NF3160 =N (NEOLUX) + F (Festoon) + 31 (31mm length) + 60 (6000K)

NF3167 =N (NEOLUX) + F (Festoon) + 31 (31mm length) + 67 (6000K)

Product Information

NEOLUX® T10 12V 6000K (BLI2)



Product Description

Bright and more modern light with a color temperature of 6000K and 6700K. The NEOLUX Retrofits are the perfect entry - products for customers who want to expire LED inside the Car for a lower price.

Unique Selling Proposition (USP)

- Easy installation; standardized ICE base fits into existing fixtures
- Economic pricing
- Interior: Reading light, foot area light, trunk light
- Exterior/off-road: license plate, position light, door entry light, tail light, turn indicator

Applications

- Car

Packaging Concept

- Double-blister with window allows full visibility of product
- Measurement (Length x Height): 135 x 100mm
- Order No.: NT1060

Key Technical Data

Wattage	0,5W
Voltage	12V
Light distribution angle	>120°
Luminous flux	30lm
Lifetime	>2.000hours
Color temperature	6.000K

Logistical Data

IC	AA5965202HA
EAN 10	4052899067868
Packaging Unit EAN 10	2 piece
EAN 40	4052899067875
Packaging Unit EAN 40	20 pieces

Product Information

NEOLUX® T10 12V 6700K (BLI2)



Product Description

Bright and more modern light with a color temperature of 6000K and 6700K. The NEOLUX Retrofits are the perfect entry - products for customers who want to expire LED inside the Car for a lower price.

Unique Selling Proposition (USP)

- Easy installation; standardized ICE base fits into existing fixtures
- Economic pricing
- Interior: Reading light, foot area light, trunk light
- Exterior/off-road: license plate, position light, door entry light, tail light, turn indicator

Applications

- Car

Packaging Concept

- Double-blister with window allows full visibility of product
- Measurement (Length x Height): 135 x 100mm
- Order No.: NT1067

Key Technical Data

Wattage	0,5W
Voltage	12V
Light distribution angle	>120°
Luminous flux	30lm
Lifetime	>2.000hours
Color temperature / Beam angle	6.700K

Logistical Data

IC	AA5965302HA
EAN 10	4052899067882
Packaging Unit EAN 10	2 piece
EAN 40	4052899067899
Packaging Unit EAN 40	20 pieces

Fight Guide

NEOLUX® T10 12V 6000K/6700K

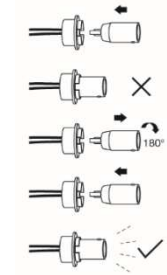
Benchmark Information:

- 30lm lumen output as market average
- Higher reliability with 70 °C burning test of > 240 hours. M4 retrofit in the market can only be burnt <100 hours.
- Over voltage test > 17V
- Reverse voltage protection

Application notes:

- LED Retrofits are so far legal for off – road use only
- LED Retrofit burning should according to polar. If the retrofit can't work, please revise the lamp as the following picture.

- Caution if a load resistor is added to avoid error messages on the board computer
 - Heat generation of up to 180 C
 - Risk of heat damage inside the lamp



Weaknesses:

- No certification for exterior use on public roads so far
- No outage detection so far: May lead to error message on board of computer

Sales Arguments:

- Up to 80% less energy consumption by LED
- Reliable quality with 2000 hours lifetime
- Easy and safe Plug and Play solution
- Different light color for differentiation with traditional auxiliary lamp

Product Information

NEOLUX® Festoon 31mm 12V 6000K (BLI1)



Product Description

Bright and more modern light with a color temperature of 6000K and 6700K. The NEOLUX Retrofits are the perfect entry - products for customers who want to experience LED inside the Car for a lower price.

Unique Selling Proposition (USP)

- Easy installation; standardized IEC base fits into existing fixtures
- Economic pricing
- Interior: Reading light, foot area light, trunk light
- Exterior/off-road: license plate, position light, door entry light, tail light, turn indicator

Applications

- Car

Packaging Concept

- Double-blister with window allows full visibility of product
- Measurement (Length x Height): 135 x 100mm
- Order No.: NF3160

Key Technical Data

Wattage	0,5W
Voltage	12V
Product Length	31mm
Luminous flux	30lm
Lifetime	>2.000hours
Color temperature / Beam angle	6.000K

Logistical Data

IC	AA5965404HA
EAN 10	4052899067905
Packaging Unit EAN 10	1 piece
EAN 40	4052899067912
Packaging Unit EAN 40	10 pieces

Product Information

NEOLUX® Festoon 31mm 12V 6700K (BLI1)



Product Description

Bright and more modern light with a color temperature of 6000K and 6700K. The NEOLUX Retrofits are the perfect entry - products for customers who want to experience LED inside the Car for a lower price.

Unique Selling Proposition (USP)

- Easy installation; standardized IEC base fits into existing fixtures
- Economic pricing
- Interior: Reading light, foot area light, trunk light
- Exterior/off-road: license plate, position light, door entry light, tail light, turn indicator

Applications

- Car

Packaging Concept

- Double-blister with window allows full visibility of product
- Measurement (Length x Height): 135 x 100mm
- Order No.: NF3167

Key Technical Data

Wattage	0,5W
Voltage	12V
Product Length	31mm
Luminous flux	30lm
Lifetime	>2.000hours
Color temperature / Beam angle	6.700K

Logistical Data

IC	AA5965504HA
EAN 10	4052899068384
Packaging Unit EAN 10	1 piece
EAN 40	4052899068391
Packaging Unit EAN 40	10 pieces

Product Information

NEOLUX[®] Festoon 36mm 12V 6000K (BLI1)



Product Description

Bright and more modern light with a color temperature of 6000K and 6700K. The NEOLUX Retrofits are the perfect entry - products for customers who want to expire LED inside the Car for a lower price.

Unique Selling Proposition (USP)

- Easy installation; standardized IEC base fits into existing fixtures
- Economic pricing
- Interior: Reading light, foot area light , trunk light
- Exterior/off-road: license plate, position light, door entry light, tail light, turn indicator

Applications

- Car

Packaging Concept

- Double-blister with window allows full visibility of product
- Measurement (Length x Height): 135 x 100mm
- Order No.: NF3660

Key Technical Data

Wattage	0,5W
Voltage	12V
Product Length	36mm
Luminous flux	30lm
Lifetime	>2.000hours
Color temperature / Beam angle	6.000K

Logistical Data

IC	AA5965604HA
EAN 10	4052899067929
Packaging Unit EAN 10	1 piece
EAN 40	4052899067936
Packaging Unit EAN 40	10 pieces

Product Information

NEOLUX® Festoon 36mm 12V 6700K (BLI1)



Product Description

Bright and more modern light with a color temperature of 6000K and 6700K. The NEOLUX Retrofits are the perfect entry - products for customers who want to expire LED inside the Car for a lower price.

Unique Selling Proposition (USP)

- Easy installation; standardized IEC base fits into existing fixtures
- Economic pricing
- Interior: Reading light, foot area light , trunk light
- Exterior/off-road: license plate, position light, door entry light, tail light, turn indicator

Applications

- Car

Packaging Concept

- Double-blister with window allows full visibility of product
- Measurement (Length x Height): 135 x 100mm
- Order No.: NF3667

Key Technical Data

Wattage	0,5W
Voltage	12V
Product Length	36mm
Luminous flux	30lm
Lifetime	>2.000hours
Color temperature / Beam angle	6.700K

Logistical Data

IC	AA5965704HA
EAN 10	4052899068407
Packaging Unit EAN 10	1 piece
EAN 40	4052899068414
Packaging Unit EAN 40	10 pieces

Product Information

NEOLUX® Festoon 41mm 12V 6000K (BLI1)



Product Description

Bright and more modern light with a color temperature of 6000K and 6700K. The NEOLUX Retrofits are the perfect entry - products for customers who want to expire LED inside the Car for a lower price.

Unique Selling Proposition (USP)

- Easy installation; standardized IEC base fits into existing fixtures
- Economic pricing
- Interior: Reading light, foot area light , trunk light
- Exterior/off-road: license plate, position light, door entry light, tail light, turn indicator

Applications

- Car

Packaging Concept

- Double-blister with window allows full visibility of product
- Measurement (Length x Height): 135 x 100mm
- Order No.: NF4160

Key Technical Data

Wattage	0,5W
Voltage	12V
Product Length	41mm
Luminous flux	30lm
Lifetime	>2.000hours
Color temperature / Beam angle	6.000K

Logistical Data

IC	AA59658034A
EAN 10	4052899067943
Packaging Unit EAN 10	1 piece
EAN 40	4052899067950
Packaging Unit EAN 40	10 pieces

Product Information

NEOLUX® Festoon 41mm 12V 6700K (BLI1)



Product Description

Bright and more modern light with a color temperature of 6000K and 6700K. The NEOLUX Retrofits are the perfect entry - products for customers who want to expire LED inside the Car for a lower price.

Unique Selling Proposition (USP)

- Easy installation; standardized IEC base fits into existing fixtures
- Economic pricing
- Interior: Reading light, foot area light , trunk light
- Exterior/off-road: license plate, position light, door entry light, tail light, turn indicator

Applications

- Car

Packaging Concept

- Double-blister with window allows full visibility of product
- Measurement (Length x Height): 135 x 100mm
- Order No.: NF4167

Key Technical Data

Wattage	0,5W
Voltage	12V
Product Length	41mm
Luminous flux	30lm
Lifetime	>2.000hours
Color temperature / Beam angle	6.700K

Logistical Data

IC	AA5965904HA
EAN 10	4052899068421
Packaging Unit EAN 10	1 piece
EAN 40	4052899068438
Packaging Unit EAN 40	10 pieces

Fight Guide

NEOLUX® Festoon 31mm,36mm,41mm 12V 6000K/6700K

Benchmark Information:

- 30lm lumen output as market average with one side burning
- Higher reliability with 85 °C burning test of > 240 hours. M4 retrofit in the market can only be burnt <100 hours.
- Over voltage test > 17V
- Reverse voltage protection

Application notes:

- LED Retrofits are so far legal for off – road use only
- LED Retrofit burning should according to polar. If the retrofit can't work, please revise the lamp as the following picture.
- Caution if a load resistor is added to avoid error messages on the board computer
 - Heat generation of up to 180 C
 - Risk of heat damage inside the lamp



Weaknesses:

- No certification for exterior use on public roads so far
- No outage detection so far: May lead to error message on board of computer

Sales Arguments:

- Up to 80% less energy consumption by LED
- Reliable quality with 2000 hours lifetime
- Easy and safe Plug and Play solution
- Different light for differentiation with traditional auxiliary lamp

Artwork (example) NEOLUX® Retrofits

